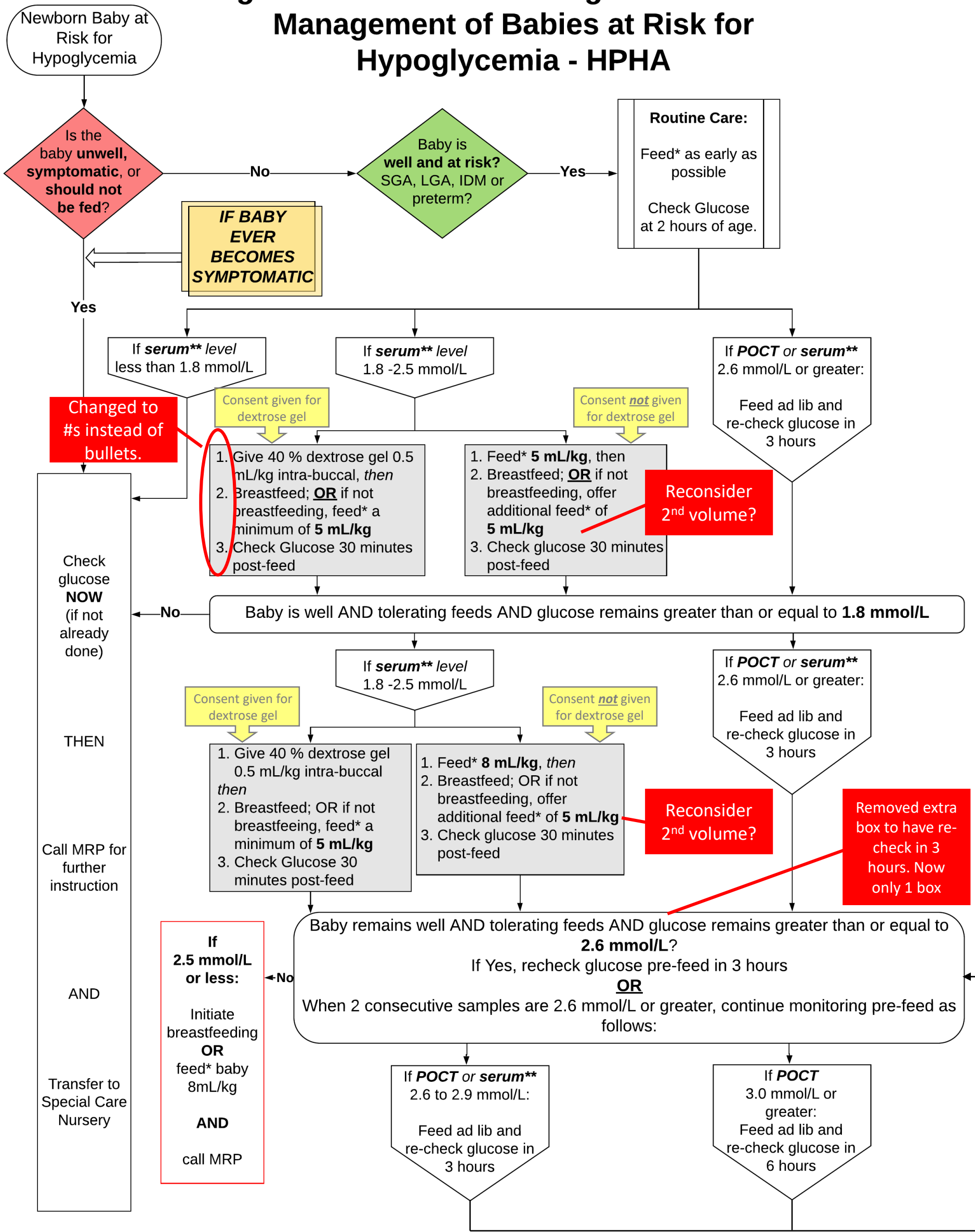


Algorithm for the Screening and Immediate Management of Babies at Risk for Hypoglycemia - HPHA



Maximum of TWO doses of dextrose gel to be given.
If a third dose is required, call MRP and transfer to SCN.

40% Glucose Gel Calculation (prefer Insta-glucose)
0.5 mL/kg X _____ kg = _____ mL

Infant must have at least **TWO** consecutive glucose levels 2.6 mmol/L or greater without intervention (Dextrose or Supplemental Feed) before discontinuing surveillance.
❖ Contact MRP if surveillance goes beyond recommended duration.

***Fluids for supplemental feeds in order of preference:**

1. EBM,
 2. Donor Milk*
 3. Formula
- * if available

Duration of Surveillance:

- ❖ Well LGA infants or infants born to diabetic mothers = 12 hrs
- ❖ Well premature, SGA or IUGR infants = 24 hrs
- ❖ Maternal Beta-blocker (Labetalol) and/or Betamethasone exposure during pregnancy = 12 hrs