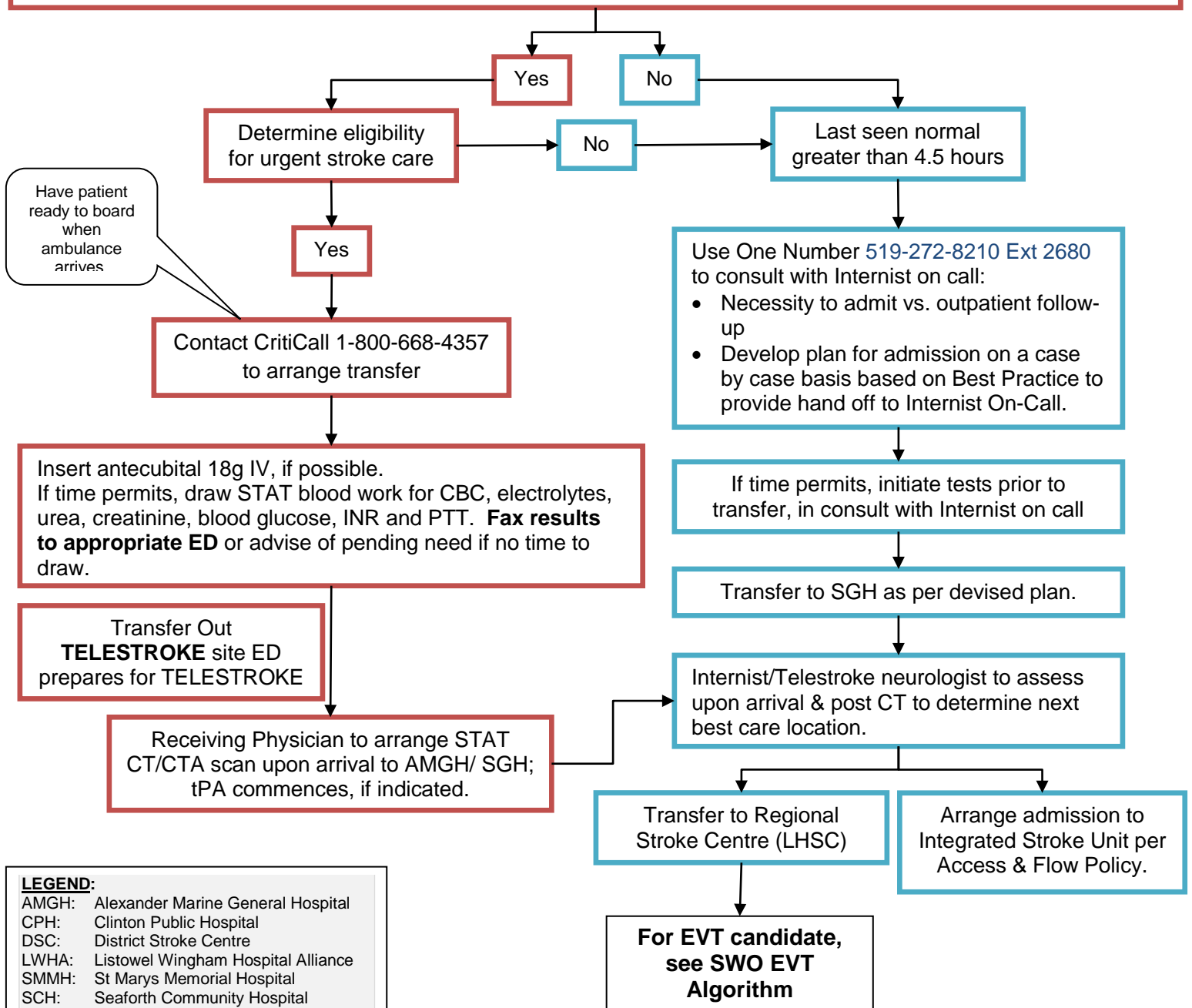


## HURON PERTH COUNTIES ED TO ED EMERGENCY STROKE TRANSFERS WALK-IN STROKE

- ABC's stable? (Includes finger prick for blood glucose level) ED Nurse and ED Physician triage patient. ED Physician needs to confirm symptoms and time of onset. Assess for Sudden onset of at least one of the following:
  - Unilateral arm or leg weakness or drift
  - Slurred, inappropriate/muted speech
  - Onset of symptoms, "Last Seen Normal" **less than 4.5 hours**. (**PLEASE NOTE: For patients with disabling symptoms and present within the 4.5 to 6 hour window, these patients may be potential candidate for EVT**)
- Patient is not terminally ill
- Patient is triaged as CTAS 1 in ED



**LEGEND:**

- AMGH: Alexander Marine General Hospital
- CPH: Clinton Public Hospital
- DSC: District Stroke Centre
- LWHA: Listowel Wingham Hospital Alliance
- SMMH: St Marys Memorial Hospital
- SCH: Seaforth Community Hospital
- SHHA: South Huron Hospital Association
- SGH: Stratford General Hospital