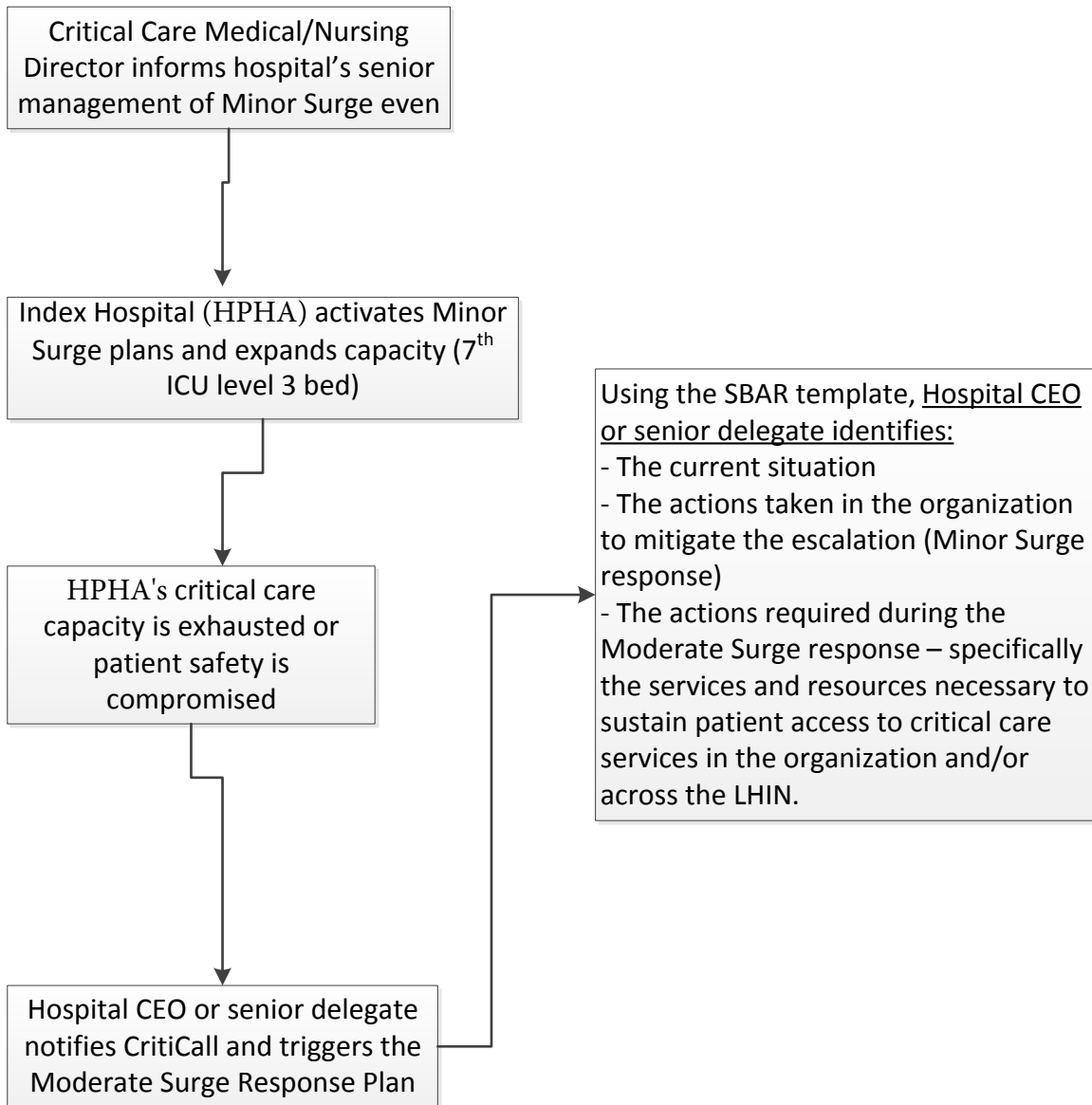


Index Hospital Moderate Surge Escalation

Definition Moderate Surge: A larger increase (>115%) in demand for critical services that impacts on a LHIN level, where an organized response at the regional network level is required. Occurs when a hospital in Minor Surge is no longer able to maintain services and needs to rely on the resources of other hospitals to assist with managing the surge. For HPHA ICU, this would happen if we have to admit more than 5 patients requiring a ventilator or if we are at 7 red status patients on ICU level 3.



Moderate Surge Response Card

(For HPHA)

Index Hospital: Hospital experiencing the surge event (HPHA)

Partner Hospital: Other hospitals in our LHIN

Minor Surge: Critical care demand >100% and <115% of capacity

Moderate Surge: Critical care demand \geq 115% of capacity

Major Surge: Critical care demand overwhelms LHIN

1. Only the Index Hospital CEO/senior delegate can initiate a Moderate Surge by calling CritiCall and requesting a preamble call
 - **CritiCall: 1-877-ONT-SURGE.**
 - Before a Moderate Surge can be declared, Minor Surge response must be exceeded at your hospital.
2. Pre-amble Call will include:
 - Hospital CEO, Medical and Nursing Director at your (Index) Hospital,
 - Critical Care LHIN Leader,
 - CCSO.
3. The SBAR form should be completed by your critical care team and used to provide a status report on the preamble call.
4. The Critical Care LHIN Leader will chair the pre-amble call.
5. If a Moderate Surge is declared, CritiCall will contact the appropriate/identified partner hospital(s) and facilitate another teleconference to review possible solutions to address your surge event.
6. After the call, ensure your critical care team is aware of the solution(s) and prepared for subsequent calls from CritiCall.
7. Subsequent follow-up calls will occur until the surge event has been properly addressed and the Moderate Surge has been concluded by the CC LHIN Leader. CritiCall will document.

Index Hospital SBAR Form

SBAR Report		Date:
Time preamble call will start:	Call in Number at CritiCall: Participant code:	
Index Hospital & LHIN:		
Name of Index Hospital CEO/delegate:		
Title (of delegate):	Phone #:	
Situation: Please Provide Summary of the Situation in the section below		
<p>What is your current status? Please insert # :</p> <p>_____ critical care capacity at Moderate Surge level (≥ 115%)</p> <p>_____ critical care bed capacity (insert bed occupancy rate from CCIS)</p>		
Confirm that CCIS is updated daily? <input type="checkbox"/> Yes <input type="checkbox"/> No		
Confirm that the hospital's senior management team has been informed? <input type="checkbox"/> Yes <input type="checkbox"/> No		
Background: What Factors Led to the Moderate Surge Event?		
<p>Assessment: What are the threats to patients/operations (e.g. lack of vents/beds/staff)</p>		
<p>What is your current patient compliment? (Please insert the # of patients in each category)</p> <p>___ # patients are red (i.e. will remain in ICU)</p> <p>___ # patients are yellow (i.e. possibility of transfer within 36 hours)</p> <p>___ # patients are green (i.e. ready to leave ICU immediately)</p>		
<p>What responses have been executed? (e.g. flexed up, activated fan-out/call-in, called other sites)</p>		

List of patients requiring possible transfer? Fill out section below:

NOTE: For patient privacy this portion of the form will be for internal use only

SBAR Reporting Form: Patients Needing Transfer

Pt #	Patient Identifier	Age	M/F	Diagnosis	Vented Y/N	Location	MRP Service	Necessity of Isolation? Y/N
1								
2								
3								
4								
5								

Recommendation

What are the recommended actions from the preamble call, proposed to sustain and provide safe patient care?

ALGORITHM FOR DECLARING MODERATE SURGE

